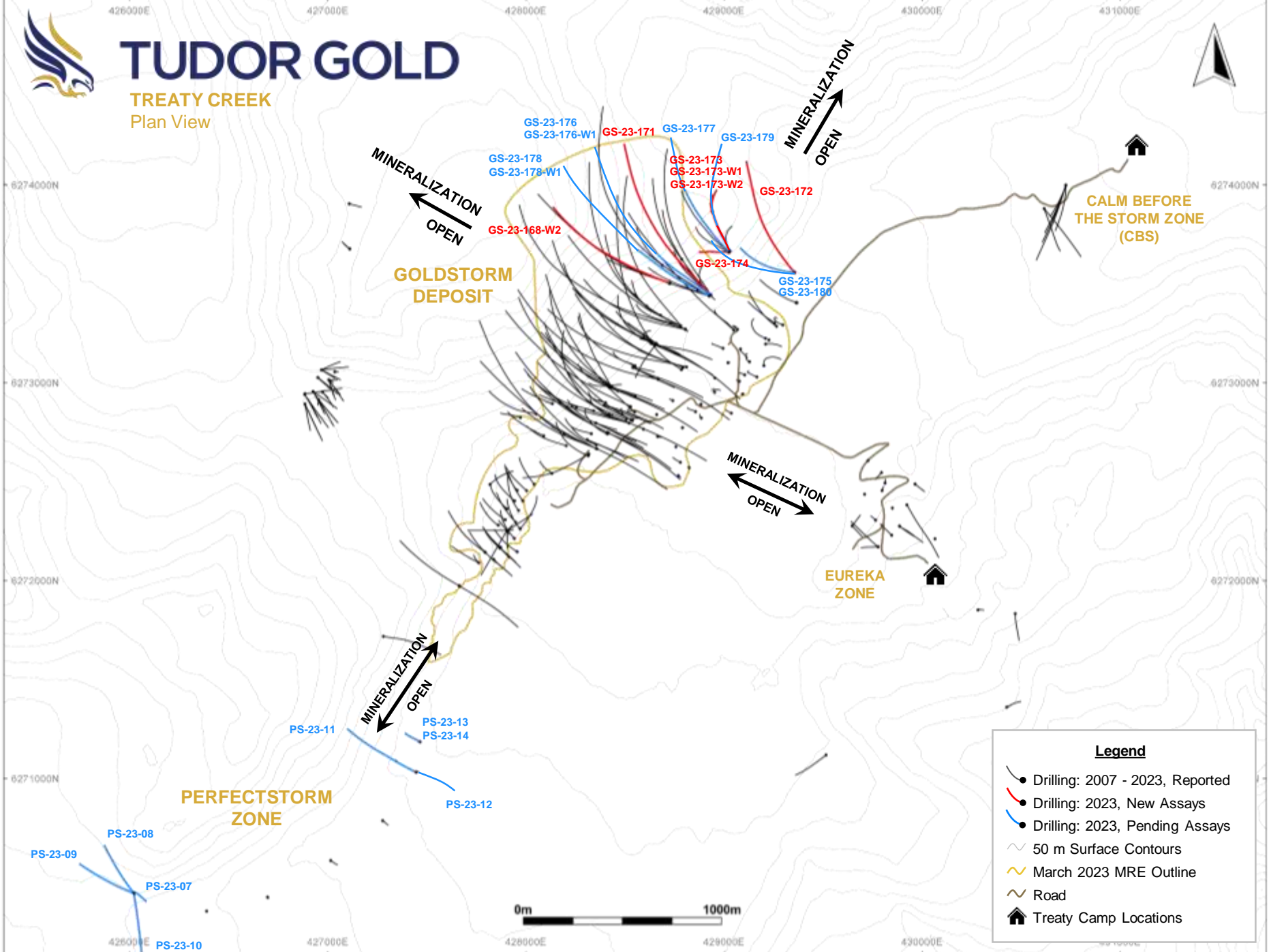




TUDOR GOLD

TREATY CREEK
Plan View



MINERALIZATION
OPEN

MINERALIZATION
OPEN

MINERALIZATION
OPEN

MINERALIZATION
OPEN

GOLDSTORM
DEPOSIT

PERFECTSTORM
ZONE

EUREKA
ZONE

CALM BEFORE
THE STORM ZONE
(CBS)

Legend

- Drilling: 2007 - 2023, Reported
- Drilling: 2023, New Assays
- Drilling: 2023, Pending Assays
- ~ 50 m Surface Contours
- ~ March 2023 MRE Outline
- ~ Road
- 🏠 Treaty Camp Locations

0m 1000m



426000E 427000E 428000E 429000E 430000E 431000E

TUDOR GOLD

TREATY CREEK
Section Areas 1 - Plan View



6274000N 6273000N 6272000N 6271000N

MINERALIZATION
OPEN

MINERALIZATION
OPEN

GOLDSTORM
DEPOSIT

CALM BEFORE
THE STORM ZONE
(CBS)

SECTION 117+00 NE

MINERALIZATION
OPEN

EUREKA
ZONE

MINERALIZATION
OPEN

PERFECTSTORM
ZONE

6273000N 6272000N 6271000N

Legend

- Drilling: 2007 - 2023, Reported
- Drilling: 2023, New Assays
- Drilling: 2023, Pending Assays
- ~ 50 m Surface Contours
- ~ March 2023 MRE Outline
- ~ Road
- 🏠 Treaty Camp Locations



426000E 427000E 428000E 429000E 430000E



426000E 427000E 428000E 429000E 430000E 431000E

TUDOR GOLD

TREATY CREEK
Section Areas 2 - Plan View

6274000N 6273000N 6272000N 6271000N



MINERALIZATION
OPEN

MINERALIZATION
OPEN

CALM BEFORE
THE STORM ZONE
(CBS)

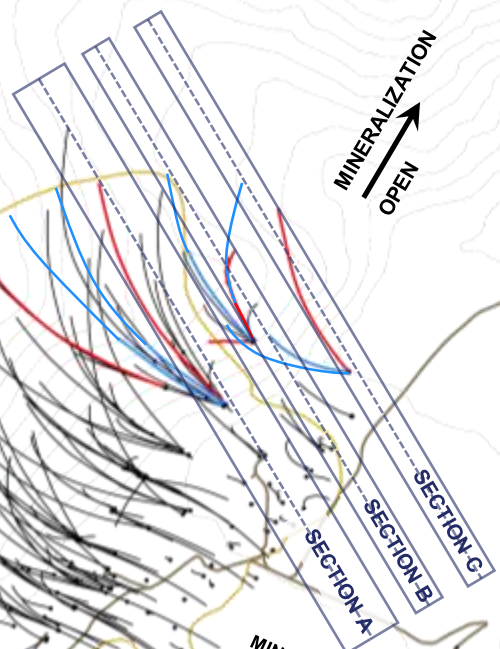
GOLDSTORM
DEPOSIT

MINERALIZATION
OPEN

EUREKA
ZONE

PERFECTSTORM
ZONE

MINERALIZATION
OPEN



6272000N 6271000N

Legend

- Drilling: 2007 - 2023, Reported
- Drilling: 2023, New Assays
- Drilling: 2023, Pending Assays
- ~ 50 m Surface Contours
- ~ March 2023 MRE Outline
- ~ Road
- 🏠 Treaty Camp Locations



426000E 427000E 428000E 429000E 430000E

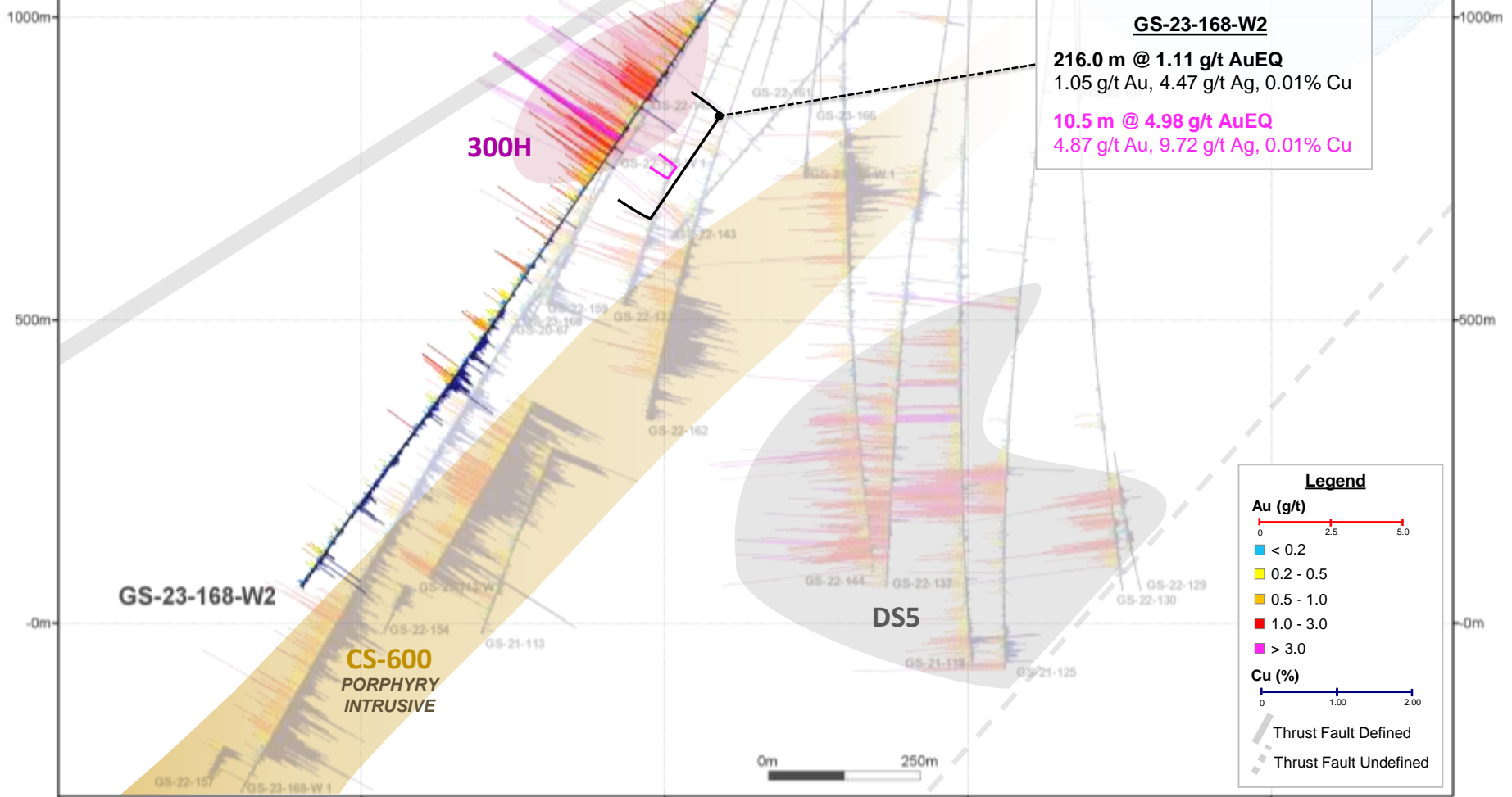
← Northwest (300°)

Southeast (120°) →



TUDOR GOLD

GOLDSTORM DEPOSIT
Section 117+00 NE
Viewing Northeast (030°), +/- 75 m



GS-23-168-W2
216.0 m @ 1.11 g/t AuEQ
 1.05 g/t Au, 4.47 g/t Ag, 0.01% Cu
10.5 m @ 4.98 g/t AuEQ
 4.87 g/t Au, 9.72 g/t Ag, 0.01% Cu

Legend

Au (g/t)

- 0 - 0.2
- 0.2 - 0.5
- 0.5 - 1.0
- 1.0 - 3.0
- > 3.0

Cu (%)

- 0 - 1.00
- 1.00 - 2.00

Thrust Fault Defined (solid line)

Thrust Fault Undefined (dashed line)

x: 427776 y: 6274066 x: 428209 y: 6273816 x: 428642 y: 6273566 x: 429075 y: 6273316 x: 429508 y: 6273066

← Northwest (330°)

Southeast (150°) →



TUDOR GOLD

GOLDSTORM DEPOSIT

Section A

Viewing Northeast (060°), +/- 100 m

1000m

1000m

500m

500m

-0m

-0m

GS-23-171

255.0 m @ 1.18 g/t AuEQ
1.15 g/t Au, 2.01 g/t Ag, 0.01% Cu

27.0 m @ 2.43 g/t AuEQ
2.42 g/t Au, 0.57 g/t Ag, 0.01% Cu

55.5 m @ 3.35 g/t AuEQ
3.27 g/t Au, 6.62 g/t Ag, 0.01% Cu

91.5 m @ 1.03 g/t AuEQ
0.86 g/t Au, 3.24 g/t Ag, 0.12% Cu

GS-23-174

213.0 m @ 1.45 g/t AuEQ
0.89 g/t Au, 13.32 g/t Ag, 0.36% Cu

72.0 m @ 2.01 g/t AuEQ
1.30 g/t Au, 23.34 g/t Ag, 0.40% Cu

300H

GS-23-174

DS5

CS-600
PORPHYRY
INTRUSIVE

GS-23-171

Legend

Au (g/t)

0 2.5 5.0

- < 0.2
- 0.2 - 0.5
- 0.5 - 1.0
- 1.0 - 3.0
- > 3.0

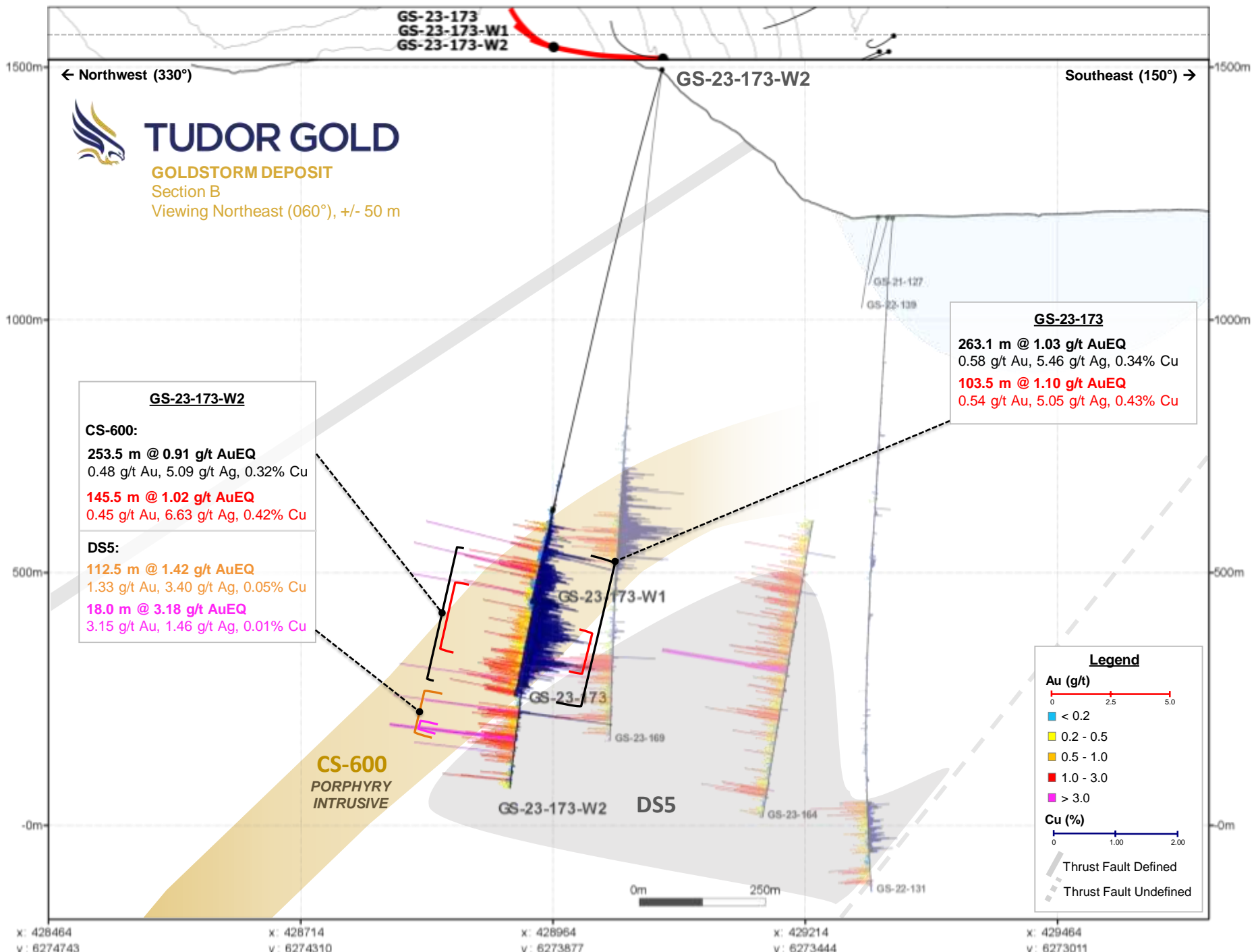
Cu (%)

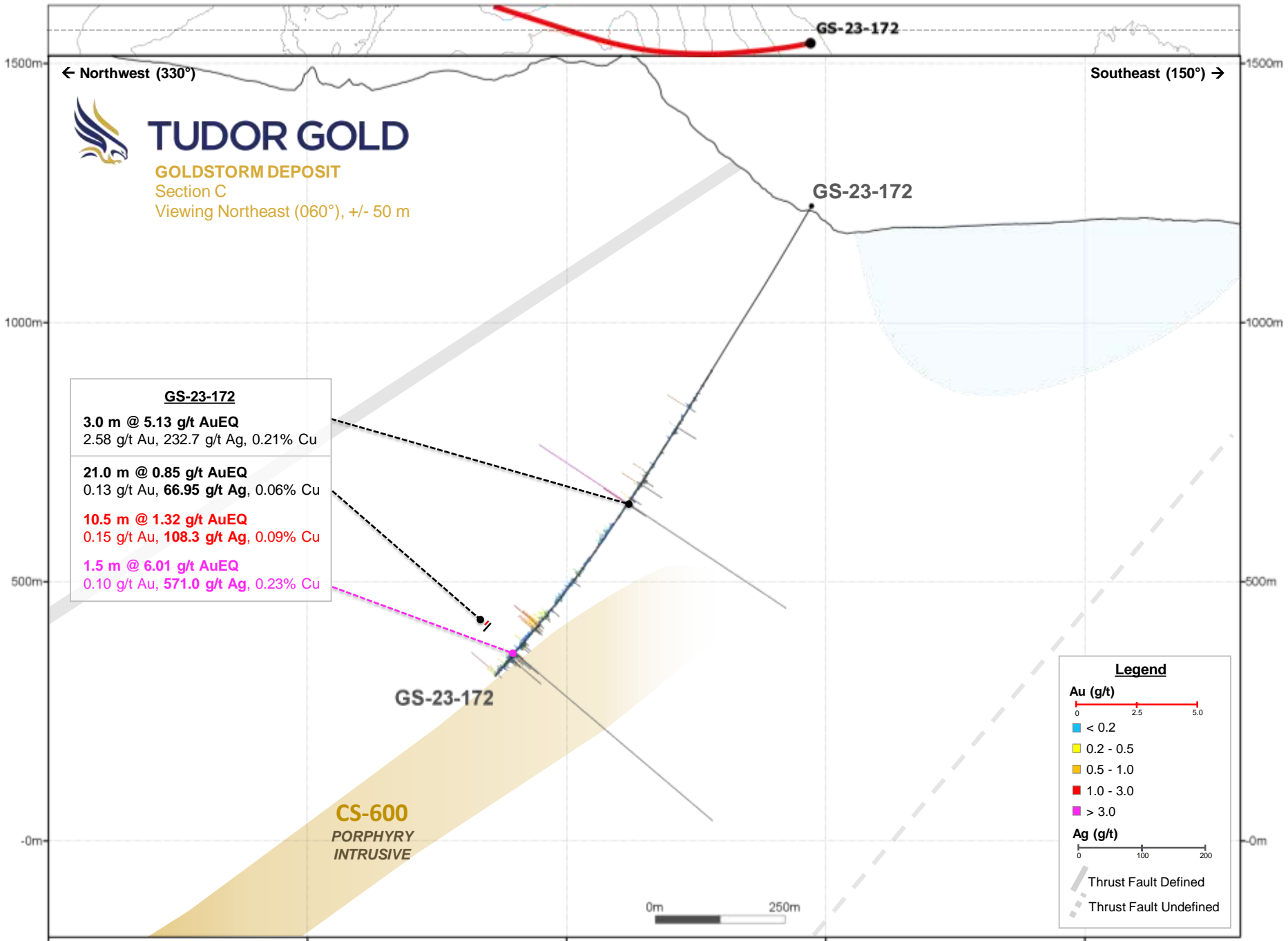
0 1.00 2.00

- Thrust Fault Defined
- Thrust Fault Undefined



x: 428269 x: 428519 x: 428769 x: 429019 x: 429269
 y: 6274632 y: 6274199 y: 6273766 y: 6273333 y: 6272900





GS-23-172

3.0 m @ 5.13 g/t AuEQ 2.58 g/t Au, 232.7 g/t Ag, 0.21% Cu
21.0 m @ 0.85 g/t AuEQ 0.13 g/t Au, 66.95 g/t Ag , 0.06% Cu
10.5 m @ 1.32 g/t AuEQ 0.15 g/t Au, 108.3 g/t Ag , 0.09% Cu
1.5 m @ 6.01 g/t AuEQ 0.10 g/t Au, 571.0 g/t Ag , 0.23% Cu

x: 428632 y: 6274839 x: 428882 y: 6274406 x: 429132 y: 6273973 x: 429382 y: 6273540 x: 429632 y: 6273107